

# Health Select Commission 2015 Adult Social Care Services

*Professor Graeme Betts*  
*Interim Director of Adult Social Services*

# Introduction and Purpose of Session

- To provide Members of the Health Select Commission with an overview of Adult Social Care
- To outline the challenges facing Adult Social Care
- To provide Members with an understanding of what services will be required in the future



# Changes in ASC nationally - from dependency to resilience

- From institutions to community and home-based services
- Improvements in supporting people to live their lives independently
- Greater use of information and advice, one-off interventions and advocacy
- Greater focus on prevention, early intervention, rehabilitation, recovery and reablement and enablement
- Greater use of housing-based support, telecare and other technologies
- Focus on supporting carers
- Greater use of personal budgets to increase choice and control
- Better joint working with the NHS



## The challenges facing ASC

- Demography
- Expectations
- Quality standards
- Safeguarding
- Resources

# Rotherham Demographics

	Year	2000	2010	2020	2031+/-	overall change +/-	Regional Y&H average	National Average
Age Group	Populations							
25-64		132600	134800	135200	130100	-2500	143000	3039000
65-84		34200	38900	47300	55500	21300	394000	4293000
85+		4000	5300	6800	11000	7000	130000	1453000
	Totals	170800	179000	189300	196600	25800	667000	8785000
25-64	% change +/-		1.7%	0.3%	-3.8%	-1.9%	5.5%	11.6%
65-84			13.7%	21.6%	17.3%	62.3%	56.2%	62.8%
85+			32.5%	28.3%	61.8%	175.0%	136.8%	152.9%

## The challenges facing ASC

- Expectations
- Quality Standards
- Safeguarding
- Resources

# Adult Social Care Revenue Budget 2015/16

Service Area	Gross Exp (£000)	Gross Income (£000)	Net Exp (£000)
Adult Services	102,186	-34,286	67,900
<u>Matrix</u>			
Commissioning	999	-156	843
Performance & Quality	1,598	-425	1,173

## Net Savings for the last 3 years (after investments)

2012-13	2013-14	2014-15
3,760	6,167	4,401

For the matrix managed services this shows the full budget including CYPS and Adult Services. Budget split still being finalised.

# Rotherham ASC

## Headline figures from 2014/15

- Over 6400 people received a service during the year (excluding OT only services).
- Approximately 4000 Social Care Assessments or re-assessments were undertaken during the year
- 90% of service users on service for more than a year received a review of their needs.
- 1,700 adults and older people placed in residential and nursing care



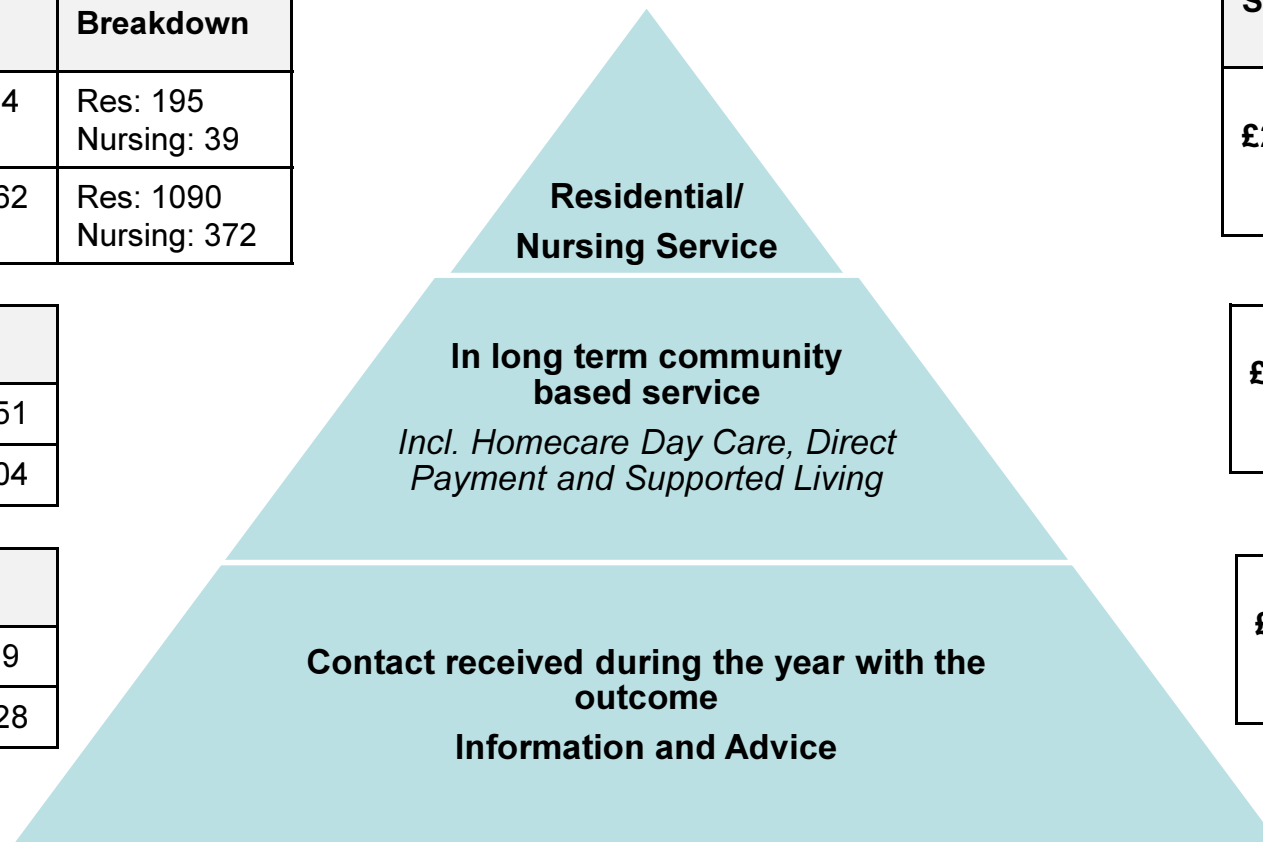


# Pyramid of Care

Age	No.	Breakdown
18-64	234	Res: 195 Nursing: 39
65+	1462	Res: 1090 Nursing: 372

Age	No.
18-64	2051
65+	2204

Age	No.
18-64	889
65+	1828



Service Cost
£22,139,903

£22,399,007
-------------

£371,517
----------



- A website for adults in Rotherham who need support to live independently.
- The website offers information and advice, and is also an e-marketplace offering 1905 products and 414 services.
- Generates an average 800 hits a month.
- [www.connectosupport.org/rotherham](http://www.connectosupport.org/rotherham)



*Connect to Support supports the following agendas:*

- Self-serve and channel shift
- Dependence to Independence
- Preventative
- Supports the Care Act through advice and information
- Has the potential to be further developed to provide, personalised guidance, self-assessment, financial assessment, care accounts, support planning and more

# Shared Lives

- Shared Lives offers opportunities for vulnerable adults to live or spend time with approved carers and their families
- This could be for a few hours or a few days a week (befriending), short stays in the home of the Shared Lives carer, or living as a member of their family
- There are over 50 users of the service. Currently all long term and respite users have a learning disability. Befriending is mostly used by older people and/or people with dementia or physical difficulties
- Carers are approved and supported by Shared Lives workers, and receive fees and expenses. Shared Lives is registered with the Care Quality Commission.



Sam (left) and Cath (right)

Sam is 25. He has been blind since birth and has a learning disability. He has lived with Cath since he was a baby. Last year he went to Tenerife with Cath, her son and daughter-in-law. He pays rent and contributes to household bills. The cost to adult social care for his Shared Lives placement is about **£280** per week.

**A residential place for Sam would cost adult social care over £1,000 per week.**

Cath's husband, Fred, died 4 years ago. She has had severe health problems herself and regular respite for Sam is essential. Sam used to have respite at Sunnyside Care Home. The cost to adult social care was over **£1800** per week.



The Gallagher family - Martin, Niamh and Sharon – with Oscar

The Gallagher family started offering Shared Lives respite about 2 years ago. Five people with a learning disability have short breaks – and lots of fun – with the family. Sam was one of the first to have respite with them. The Gallaghers have become close friends to Sam and Cath.

**The average cost to adult social care for Shared Lives respite is less than £450 per week.**

# Shared Lives

**person centred  
cost effective**



**We welcome the opportunity to support more  
Rotherham people**

# Changes to Eligibility Criteria

- A new national eligibility framework – a single, consistent route to determining people’s entitlement to care and support
  - Based on principles of wellbeing
  - Assessment to be based on ‘strengths’ instead of deficits and to be asset based
  - Portability of assessments
- National consultation being undertaken by the Department of Health

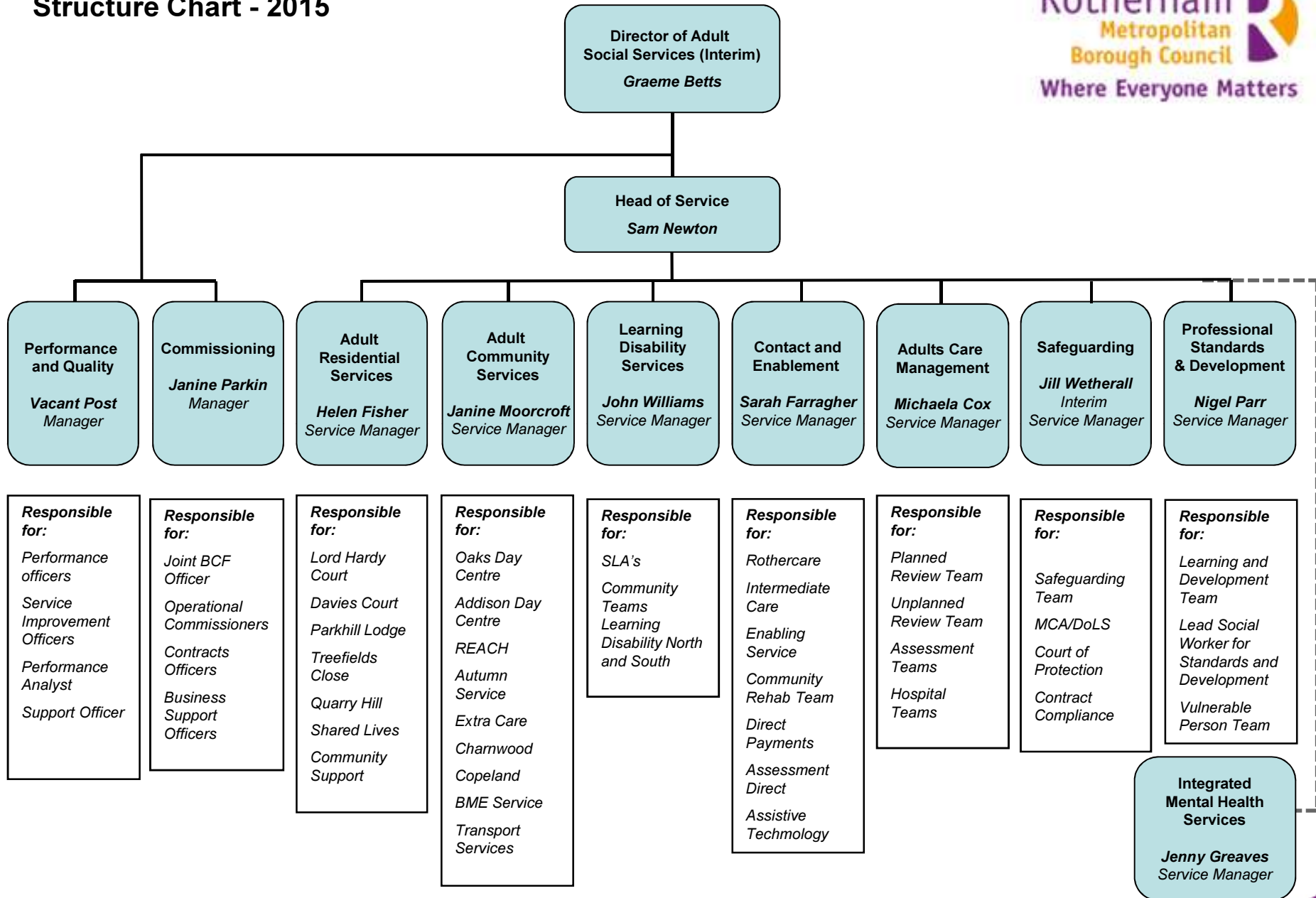


# Delivering ASC in the future

- Resilient residents accessing mainstream services
- Focus on prevention, enablement and support for carers
- Personalised services with high use of direct payments
- Strong commissioning function
- Well-developed market for social care maximising choice and control
- Wide range of micro-enterprises, Personal Assistants and Shared Lives schemes
- Strong partnerships with health and the third sector
- Well-developed co-production and co-delivery with users, carers and residents underpinning all of this



# Adult Social Services Structure Chart - 2015



Any Questions?